

SPICE-Equivalent circuit model library

Table 1. Equivalent circuit data

Part Number	L (μ H)	F _{res} (MHz)	C1 (pF)	R1 (Ω)	R2 Nominal DCR of winding (Ω)
DR1050-1R5-R	1.37	78.4	3.01	1920.50	0.004
DR1050-2R2-R	2.2	60.2	3.18	2739.62	0.006
DR1050-3R3-R	3.21	48.7	3.33	3637.08	0.008
DR1050-4R7-R	4.43	40.6	3.46	4631.02	0.010
DR1050-6R8-R	6.3	33.4	3.61	6030.86	0.014
DR1050-8R2-R	8.09	29.0	3.72	7275.04	0.016
DR1050-100-R	10	25.8	3.82	8528.52	0.019
DR1050-120-R	11.6	23.7	3.88	9532.73	0.025
DR1050-150-R	14.8	20.7	4.00	11443.80	0.027
DR1050-180-R	17.5	18.8	4.08	12976.35	0.034
DR1050-220-R	23.5	16.0	4.23	16187.31	0.040
DR1050-270-R	27	14.8	4.30	17963.74	0.044
DR1050-330-R	33	13.2	4.40	20881.39	0.060
DR1050-390-R	38.3	12.1	4.48	23349.25	0.063
DR1050-470-R	47	10.8	4.59	27223.71	0.092
DR1050-560-R	56	9.8	4.69	31046.66	0.102
DR1050-680-R	67.2	8.9	4.80	35595.97	0.116
DR1050-820-R	84.4	7.8	4.93	42230.94	0.153
DR1050-101-R	97.5	7.2	5.01	47057.34	0.171
DR1050-121-R	118.3	6.5	5.13	54401.70	0.171
DR1050-151-R	150	5.7	5.28	65004.34	0.248
DR1050-181-R	180	5.1	5.40	74529.51	0.284
DR1050-221-R	220	4.6	5.53	86634.51	0.393
DR1050-271-R	263.5	4.1	5.65	99188.06	0.427
DR1050-331-R	320.6	3.7	5.78	114907.02	0.577
DR1050-391-R	390	3.3	5.92	133098.26	0.675
DR1050-471-R	480.5	2.9	6.07	155648.15	0.892
DR1050-561-R	572	2.7	6.20	177386.65	1.01
DR1050-681-R	707	2.4	6.36	207940.21	1.14
DR1050-821-R	820	2.2	6.47	232399.03	1.23
DR1050-102-R	1000	2.0	6.63	269695.63	1.62

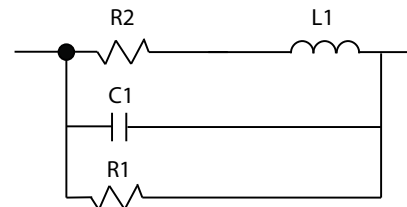


Figure 1. Equivalent circuit

Disclaimer

The data provided is for reference and is intended for evaluation purposes only. Users should verify all intended results in the end application.

**Eaton
Electronics Division**
1000 Eaton Boulevard
Cleveland, OH 44122
United States
www.eaton.com/electronics

© 2018 Eaton
All Rights Reserved
Printed in USA
Publication No. DR1050 Spice
April 2018