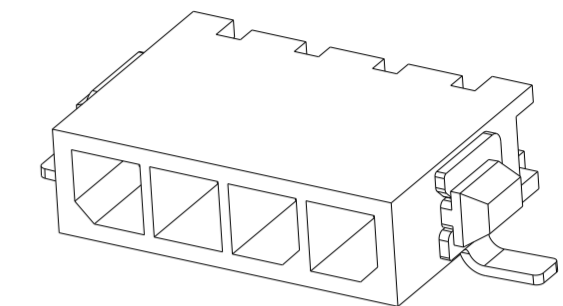
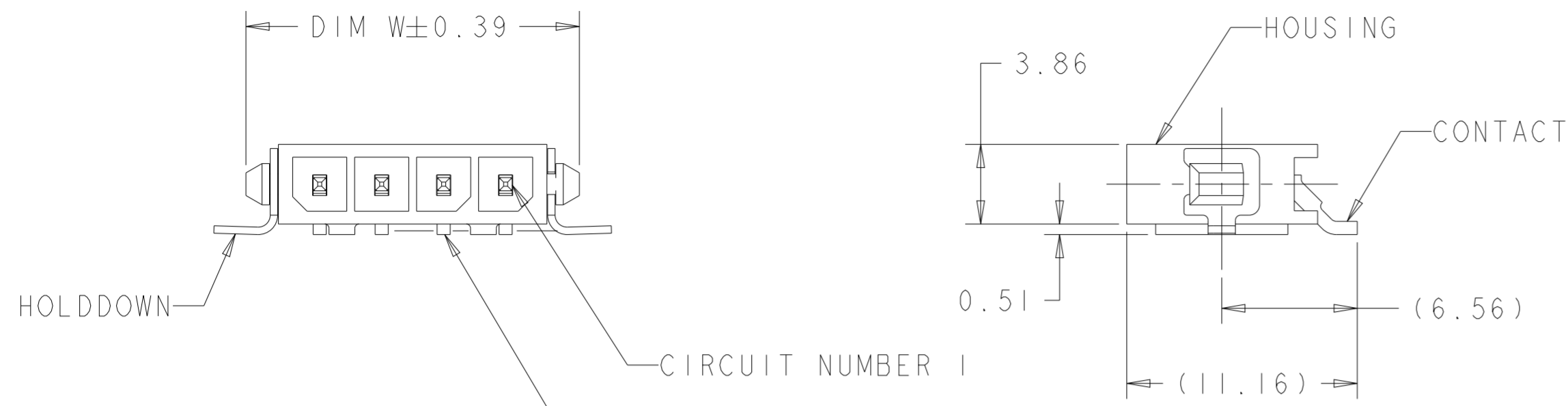
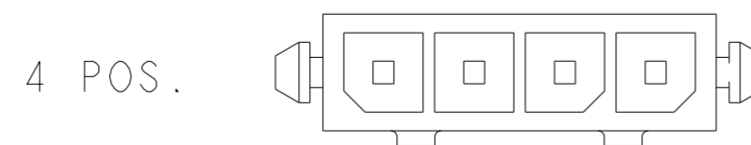
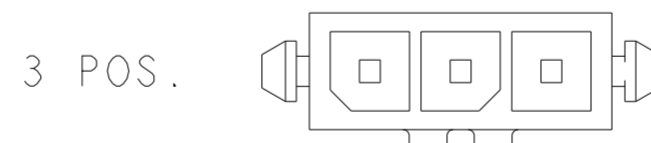
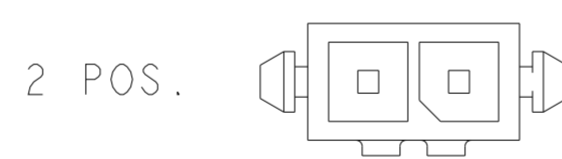
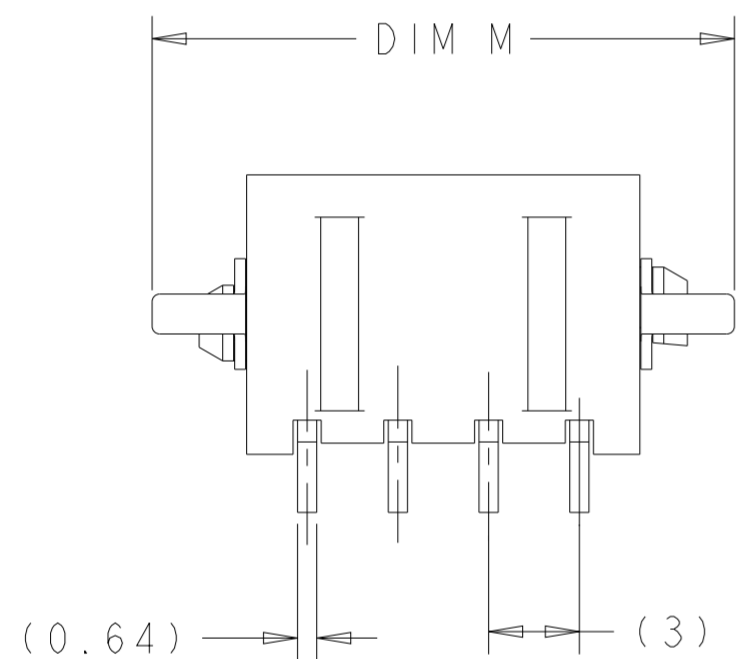


P	LTR	DESCRIPTION	DATE	DWN	APVD
A5		REVISED PER ECN-20-100589	29OCT2020	WLS	VS
A6		REVISED PER ECN-23-198901	23FEB2023	WLS	VS

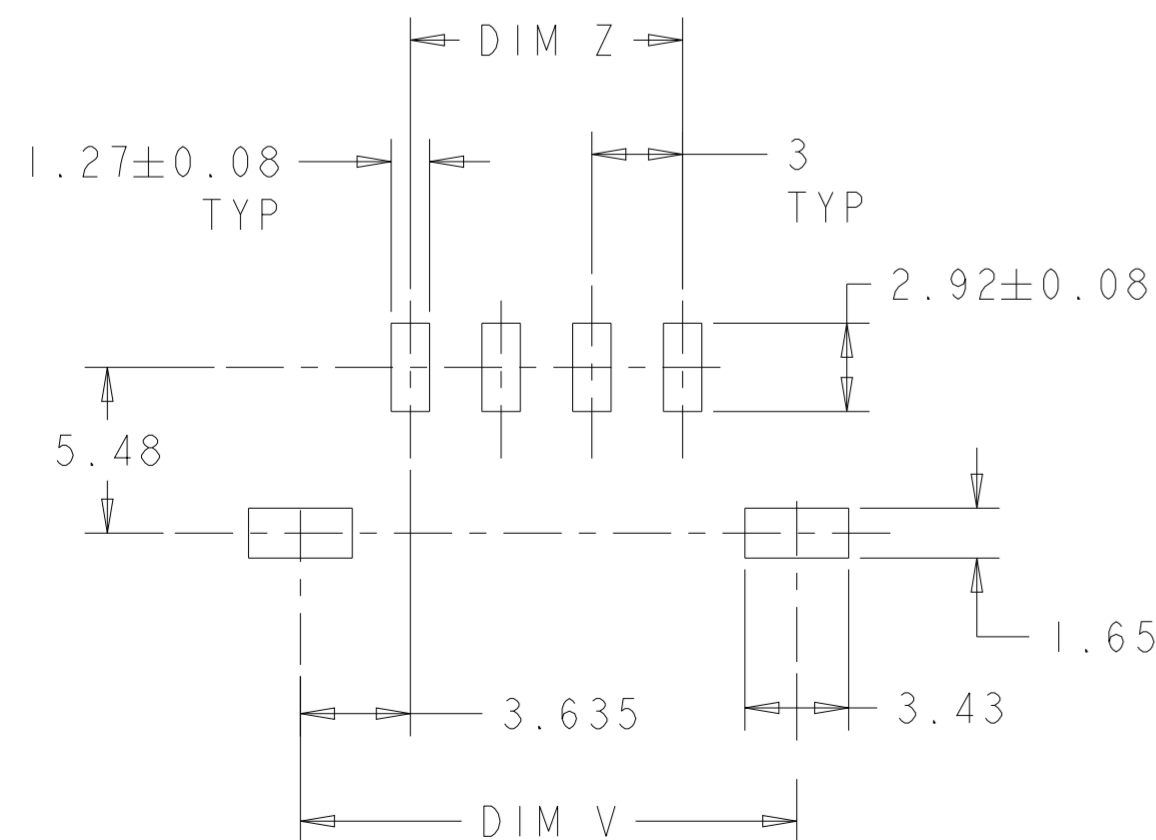


0.15
INCLUDES CONTACT TAILS,
HOUSING STANDOFFS,
AND BOARDLOCKS.

- 1 MATERIAL: HOUSING - UL 94V-0 RATED HIGH TEMP NYLON, COLOR BLACK.
CONTACTS - BRASS
HOLDDOWNS - PHOSPHOR BRONZE.
- 2 PLATING: CONTACTS - 2.54µm MINIMUM TIN OVER 1.27µm MINIMUM NICKEL.
HOLDDOWNS - 2.54µm MINIMUM TIN OVER 1.27µm MINIMUM NICKEL.
- 3 RECOMMENDED PC BOARD THICKNESS OF 1.57.
- 4 PLATING: CONTACTS - 0.762µm MINIMUM GOLD ON MATING END,
2.54µm MINIMUM TIN ON SOLDER TAILS,
ALL OVER 1.27µm MINIMUM NICKEL.
HOLDDOWNS - 2.54µm MINIMUM TIN OVER 1.27µm MINIMUM NICKEL.



KEYING BY POSITION SIZE



PCB LAYOUT COMPONENT SIDE 3

FINISH	DIM M	DIM Z	DIM W	DIM V	NO. OF POSN	PART NUMBER
4	13.25	3	10	10.41	2	1-2029030-2
2	19.25	9	16	16.41	4	2029030-4
2	16.25	6	13	13.41	3	2029030-3
2	13.25	3	10	10.41	2	2029030-2

THIS DRAWING IS A CONTROLLED DOCUMENT.		DWN K. WHITAKER 27NOV2007	TE Connectivity			
DIMENSIONS: mm		CHK C. JONES 27NOV2007				
TOLERANCES UNLESS OTHERWISE SPECIFIED:		APVD C. JONES 27NOV2007	NAME RT ANG SURF MNT HDR ASSY, SGL LATCH, TIN POSTS, SURF MOUNT HOLDDOWNS, SINGLE ROW, MICRO MATE-N-LOK(TM)			
0 PLC ±0.13 1 PLC ±0.13 2 PLC ±0.13 3 PLC ±0.13 4 PLC ±0.13 ANGLES ±°		PRODUCT SPEC 108-1836	SIZE A2			
MATERIAL 1		APPLICATION SPEC 114-13000	CAGE CODE 00779		DRAWING NO C-2029030	
SEE TABLE		WEIGHT -	RESTRICTED TO -		SCALE 4:1 SHEET 1 OF 1 REV A6	
CUSTOMER DRAWING						