

Flyback Converters Without Optocouplers: Existing Options

Frederik Dostal
Analog Devices, Inc.

Flyback converters are often used in applications in which galvanic isolation of a supply voltage is needed and the power to be transmitted is relatively low. Flyback converters are typically used up to about 60 W of output power.

With galvanically isolated power supplies, you have to decide which side of the galvanic isolation the controller, that is, the control integrated circuit, is going to be on. If it is located on the secondary side, control of the primary-side power switches must be provided through the galvanic isolation.

In both architectures, the controller on the primary side or the controller on the secondary side, paths for transferring a signal across the galvanic isolation are needed. Optocouplers, or opto-isolators, are frequently used for this. However, they have some unfavorable characteristics. They are usually only specified to a temperature of 85°C. Their current transfer ratio (CTR) changes over time, which means that their transfer behavior changes during the lifetime of a circuit. Also, additional components are required to control the optocouplers. The feedback loop of an isolated power supply is usually very slow if optocouplers are used. Elegant solutions to this problem have been developed in recent years. The first solution is a flyback controller, which does not measure the output voltage directly. Through investigation of the voltage across the primary-side transformer winding, sufficiently accurate conclusions about the actual output voltage can be made. The precision of this regulation depends on the application's usual conditions, including input and output voltages, load changes, and line changes.

However, for numerous applications, a regulation accuracy of $\pm 10\%$ to $\pm 15\%$ is good enough. Figure 1 shows the **LT8301**. Thanks to the integrated power switch, the IC in an SOT23 housing requires very few external components. The isolation breakdown voltage of the circuit depends only on the transformer used. This allows for great flexibility, especially if very high isolation voltages are required.

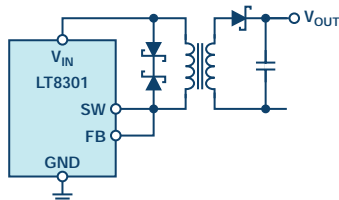


Figure 1. The **LT8301** flyback regulator without an isolated feedback path.

However, for applications requiring higher output voltage control accuracy, another interesting solution has just recently become available. With the **ADP1071**, Analog Devices has introduced a flyback controller that contains a completely integrated feedback path, with *iCoupler*® technology, to the market.

Figure 2 shows the circuit with a very small number of required passive components. The **ADP1071** contains a primary-side controller, active secondary-side rectification for increased conversion efficiency, and the completely integrated feedback path for very fast feedback loops. Through this, the output voltage regulation is very accurate and, above all, very fast, even with large load transients. Operation is permitted up to a silicon temperature of 125°C.

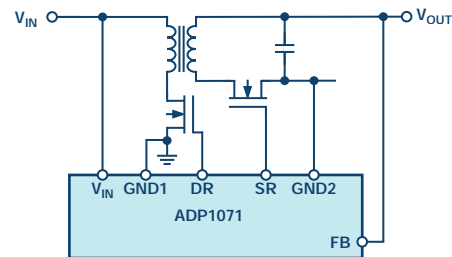


Figure 2. The **ADP1071** flyback controller with an integrated feedback path for very accurate regulation.

Here the maximum isolation voltage depends on the transformer selected as well as the isolation technology in the switching regulator IC. The chip has a maximum isolation voltage of 5 kV. Classification according to VDE V 0884-10 for reinforced insulation has been applied for.

Interesting solutions are available for developing galvanically isolated power supplies. Depending on the application case, a solution without a feedback path or one with a completely integrated feedback path may be suitable. Because the 85°C limitation of the optocoupler is done away with, compact power supplies with very high power densities can be designed.

About the Author

Frederik Dostal studied microelectronics at the University of Erlangen in Germany. Starting work in the power management business in 2001, he has been active in various applications positions including four years in Phoenix, Arizona, working on switch mode power supplies. He joined Analog Devices in 2009 and works as a field applications engineer for power management at Analog Devices in München. He can be reached at frederik.dostal@analog.com.

Online Support Community



Engage with the Analog Devices technology experts in our online support community. Ask your tough design questions, browse FAQs, or join a conversation.

Visit ez.analog.com

Analog Devices, Inc. Worldwide Headquarters

Analog Devices, Inc.
One Technology Way
P.O. Box 9106
Norwood, MA 02062-9106
U.S.A.
Tel: 781.329.4700
(800.262.5643, U.S.A. only)
Fax: 781.461.3113

Analog Devices, Inc. Europe Headquarters

Analog Devices GmbH
Otli-Aicher-Str. 60-64
80807 München
Germany
Tel: 49.89.76903.0
Fax: 49.89.76903.157

Analog Devices, Inc. Japan Headquarters

Analog Devices, KK
New Pier Takeshiba
South Tower Building
1-16-1 Kaigan, Minato-ku,
Tokyo, 105-6891
Japan
Tel: 813.5402.8200
Fax: 813.5402.1064

Analog Devices, Inc. Asia Pacific Headquarters

Analog Devices
5F, Sandhill Plaza
2290 Zuchongzhi Road
Zhangjiang Hi-Tech Park
Pudong New District
Shanghai, China 201203
Tel: 86.21.2320.8000
Fax: 86.21.2320.8222

©2019 Analog Devices, Inc. All rights reserved. Trademarks and registered trademarks are the property of their respective owners. Ahead of What's Possible is a trademark of Analog Devices. TA21252-4/19

analog.com



AHEAD OF WHAT'S POSSIBLE™